

# MONTHLY MEMBERSHIP PROGRESS REPORT

District 26 M3

Results as of: 4/30/2026

GMT:

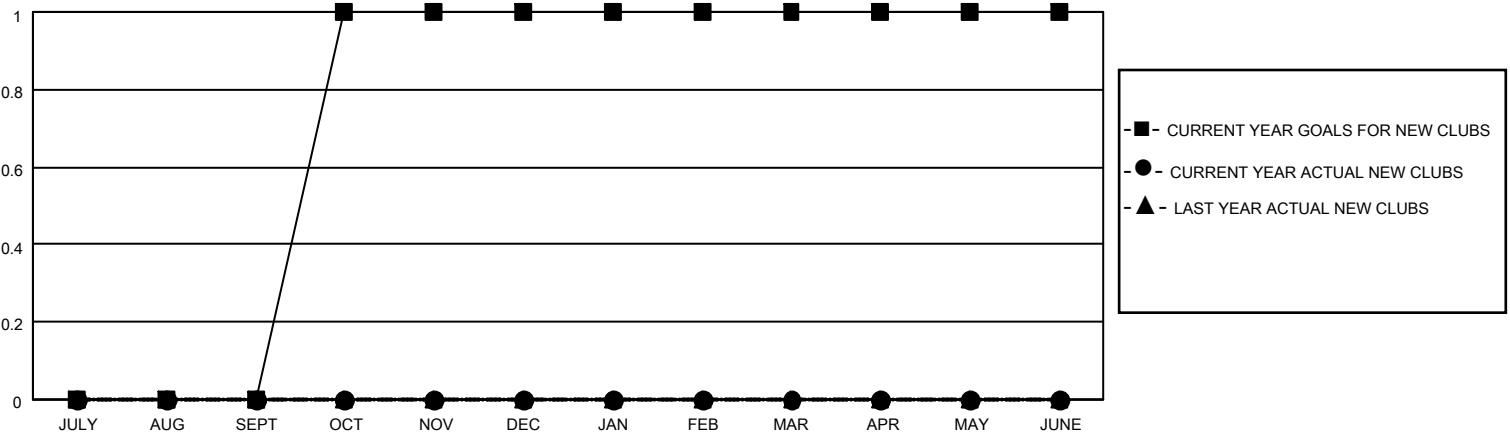
LOCATION MISSOURI

GMT CA

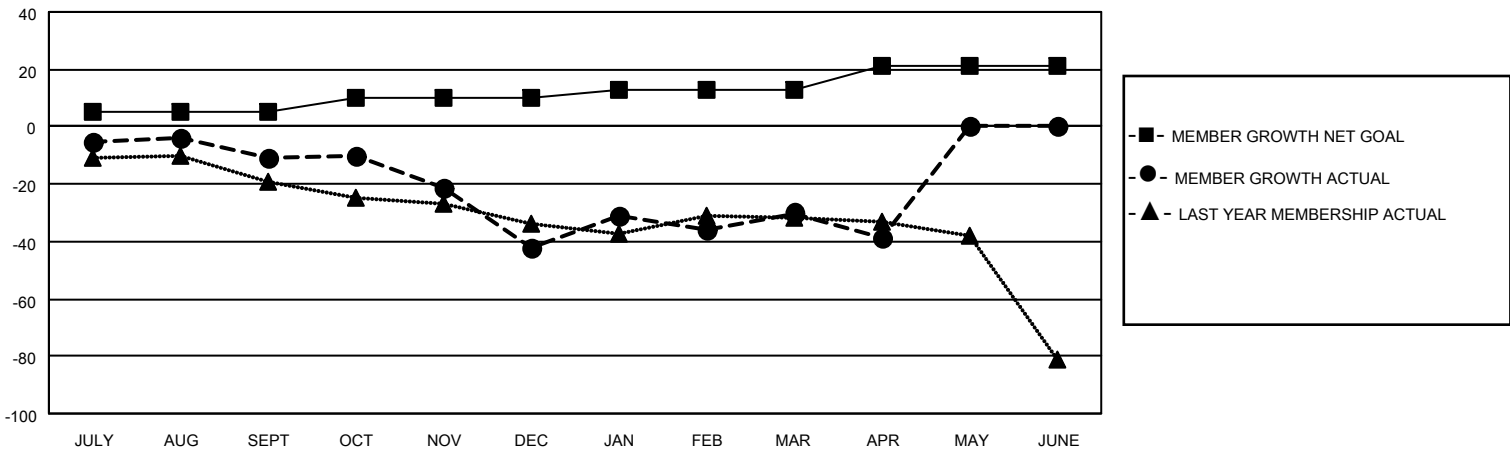
Clubs			
RESULTS FOR 2025-2026			
QUARTER	NEW CLUB GOAL	NEW CLUBS	DROPPED CLUBS
JULY/AUG/SEPT	0	0	0
OCT/NOV/DEC	1	0	2
JAN/FEB/MAR	0	0	0
APR/MAY/JUNE	0	0	0

Members			
RESULTS FOR 2025-2026			
QUARTER	MEMBER GROWTH NET GOAL	MEMBER GROWTH ACTUAL	DROPPED MEMBERS ACTUAL (including transfers)
JULY/AUG/SEPT	5	18	27
OCT/NOV/DEC	5	8	39
JAN/FEB/MAR	3	42	23
APR/MAY/JUNE	8	5	14

GOALS AND ACTUAL NEW CLUBS CUMULATIVE



GOALS AND ACTUAL MEMBERS CUMULATIVE



DROPPED CLUBS: 2	20 CLUBS OF 47 ADDED 1 OR MORE NEW MEMBERS	<b>GENDER DISTRIBUTION</b> MALE 700 (72.31%) FEMALE 267 (27.58%)
<b>DROPPED MEMBERS</b> DECEASED 15 CLUB CANCELLED 11 OTHER 77 TOTAL 103	<a href="#">CLICK HERE FOR CUMULATIVE MEMBERSHIP DATA</a>	TOTAL FAMILY UNIT MEMBERS 89 FAMILY MEMBERS PAYING HALF DUES 46